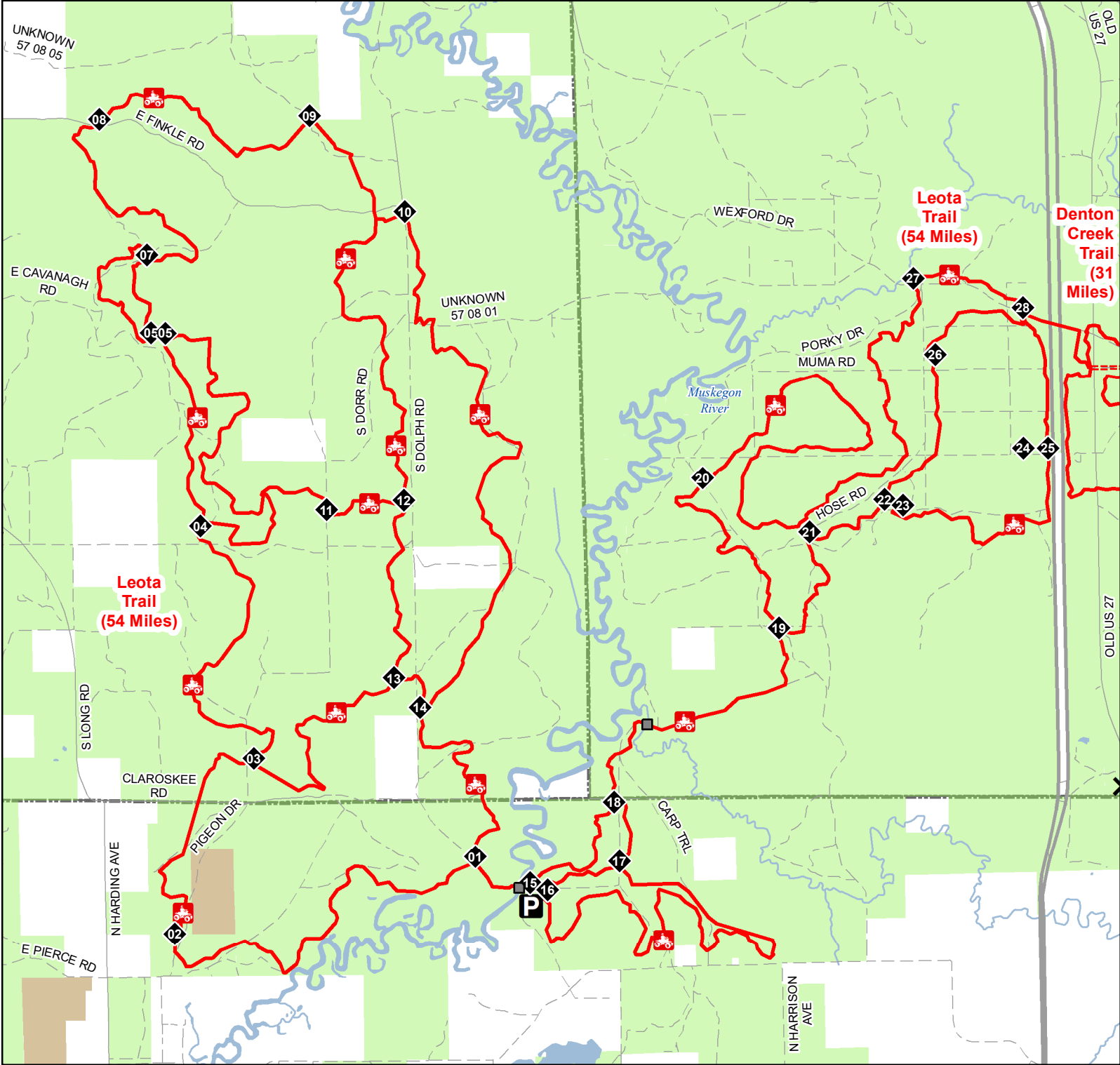




Leota Trail

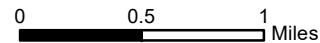
Missaukee, Roscommon & Clare Counties, Michigan

ADVISORY: Trails and Routes have two-way traffic.
DISCLAIMER: Trails shown on this map are an approximate representation of the trail system at the time of publication and may not reflect current ground conditions.
STAY ON SIGNED TRAILS ONLY!



- Gate
- Bridge
- Trail Intersection Marker (Leota)
- Parking Lot
- ORV Trail

- ORV Route – ORVs of all sizes including off-road motorcycles. ORV license and trail permit required unless licensed by the Secretary of State.
- ORV Trail – ORVs 50 inches in width or less including off-road motorcycles. ORV license and trail permit required.
- Highway
- Paved Road
- Gravel or Dirt Road
- Lake and River
- State Forest Land
- Federal Land
- County



Michigan.gov/ORVInfo
DNR Open Data Portal
gis-midnr.opendata.arcgis.com